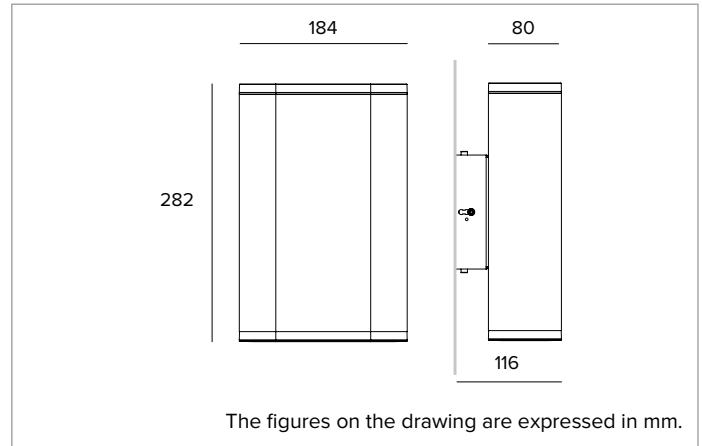


## 1E2553 | STILO Wall Flat Wall-mounted LED fixture



	3000K	H(m)	D1(m)	D2(m)	E <sub>max</sub> (lx)		
	Ra80	61°	86°				
Fixture Power	35W	1	1.51	1.98	2019		
Source Flux	4750lm	2	3.01	3.96	505		
Fixture Flux	3434lm	3	4.52	5.94	224		
Efficacy	100lm/W	4	6.02	7.91	126		
TS787	I <sub>max</sub> =464cd/klm	I <sub>max</sub>	2206cd	5	7.53	9.89	81



### SOURCE

High efficiency Chip on Board LED.

**Energy efficiency class:** D

**Nominal power:** 1x30W

**Nominal flux:** 4750lm

**Colour rendering index:** 80

**Rf:** 83

**Rg:** 96

**CCT nominal:** 3000K

**SDCM:** 2

**Lifetime (L80/B10):** >50000h tq +25°C

### ILLUMINOTECHNICAL CHARACTERISTICS

High luminous efficiency pure aluminium reflector.

**Emission:** MONO-EMISSION

**Optic:** ASYM

**Optical efficiency:** 72%

**Fixture flux:** 3434lm

**Luminous efficacy:** 100lm/W

**Photobiological safety:** Compliant with RG1 low risk group

### MECHANICAL CHARACTERISTICS

Anodized and painted extruded aluminium body and anodized and powder coated die-cast aluminium optical unit and terminal. Tempered glass protective screen. Mono-emission version.

**Colour and finish:** Ferrite

**Weight:** 3.06Kg

**Degree of protection:** IP66

**Mechanical Resistance:** IK09

### ELECTRICAL CHARACTERISTICS

Integrated IP68 ON-OFF electronic power supply. Watertight optical unit with an IP68 plug for rapid connection to the driver. Driver box fitted with IP68 watertight connectors driver and pre-cabled with 1m H07RN-F (2x1.5mm<sup>2</sup>) cable. The driver can be accessed and inspected easily thanks to the plug & light fitted in the fixture. Luminaire compliant with EN 60598-2-22 for power supply from a centralised emergency system CPSS (Central Power Supply System), not incorporated in the luminaire - high risk areas excluded. The default power and flux are 100% in AC and 100% in DC.

**Fixture Power:** 35W

**Power supply:** 220-240Vac 50/60Hz

**Insulation Class:** CLASS 2

**Type of driver / Control:** ON-OFF

**Driver included:** YES

**Class F:** YES

**SAFE FLICKER:** PstLM=<1 and SVM=<0.4 (IEC TR 61547-1 and IEC TR 63158), to ensure a more comfortable and safe light

**Ambient temperature:** -25°C / +35°C

### INSTALLATION

Parallel wall mounted version. Equipped with an AISI 316 stainless steel installation bracket. The body can be adjusted from +/-4° up to +/-8° vertically and +/-4° horizontally. The fixture can be moved up to 15mm from the mounting surface by sliding the bracket along a special guide.

### NOTES

Uses the "Waterblock Plus" technical solution that involves resin coating the connection cables and completely resin coating the integrated driver limiting the risk of humidity reaching the fixture. It is possible to subject the product to Cataphoresis treatment on request. 110-277Vac version available on request.

### WARRANTY

5 years.

### WARNING

Luminaire designed for disposal/recycling at end-of-life. Non-replaceable light source. Replaceable control gear by a professional.

*Due to the technological evolution of the electronic components, the data provided may be updated, and as such, confirmation must be requested during the order process.*

*Luminous flux and power supply have +/-10% tolerances with respect to the indicated value. tq +25°C (CIE 121).*

*We reserve the right to make technical changes.*

Targetti Sankey S.r.l.  
Via Pratese, 164  
50145 Firenze - Italy  
Tel: +39 055 37911  
targetti.com  
targetti@targetti.com

CCIAA Firenze  
Share Capital:  
€ 500.000,00  
VAT N. (IT):  
01537660480  
R.E.A: FI-275656

**TARGETTI**

**1E2553 | STILO Wall Flat**  
Wall-mounted LED fixture

**Accessories**

**Filter**



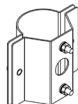
Filter	Code
Red	<b>1E3035</b>
Green	<b>1E3036</b>
Blue	<b>1E3037</b>
Yellow	<b>1E3038</b>
Magenta	<b>1E3039</b>

Chromatic coloured PMMA filter, anodised powder coated frame (ferrite).  
NSP, EFFECT, ASYM, ELLIPTICAL

Colour	Code
	<b>1E2578</b>

Anti-glare.  
PMMA holographic filter to reduce the beam angle, CNC machine anodised and powder coated aluminium frame.  
To be used with NSP, ASY and ELLIPTICAL optics.

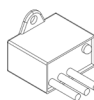
**Mounting System**



Colour	Code
	<b>1E2906</b>

Pole (Ø60mm) installation bracket.  
Powder coated stainless steel.  
NSP, ASYM, ELLIPTICAL

**Surge protector**



Code
<b>A013B</b>

Surge protector compatible with CLASS II lighting fixtures and electronic drivers.  
Operating voltage 220-240Vac.  
SPD type 2+3.  
Max surge protection 10kV.  
CLASS II  
IP67

Due to the technological evolution of the electronic components, the data provided may be updated, and as such, confirmation must be requested during the order process.  
Luminous flux and power supply have +/-10% tolerances with respect to the indicated value. tq +25°C (CIE 121).

We reserve the right to make technical changes.

Targetti Sankey S.r.l.  
Via Pratese, 164  
50145 Firenze - Italy  
Tel: +39 055 37911  
targetti.com  
targetti@targetti.com

CCIAA Firenze  
Share Capital:  
€ 500.000,00  
VAT N. (IT):  
01537660480  
R.E.A.: FI-275656

